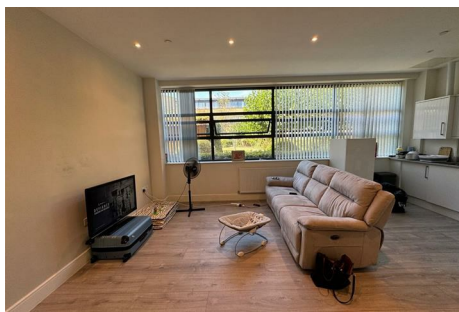




Parkfields

Estates



Heron Drive , Slough, SL3 8FA

PARKFIELDS ESTATES are pleased to offer FOR RENT This ground floor apartment located on Heron Drive in the vibrant town of Slough. This nearly new property boasts a modern design within a recent development, offering a perfect blend of style and comfort. Offering Spacious Bedroom, Open Plan Kitchen/Lounge, and modern Bathroom.

Situated just minutes away from the Elizabeth Line, commuting to London and beyond is convenient and effortless. Whether you work in the city or simply enjoy exploring all that London has to offer, this location is ideal for both work and play.

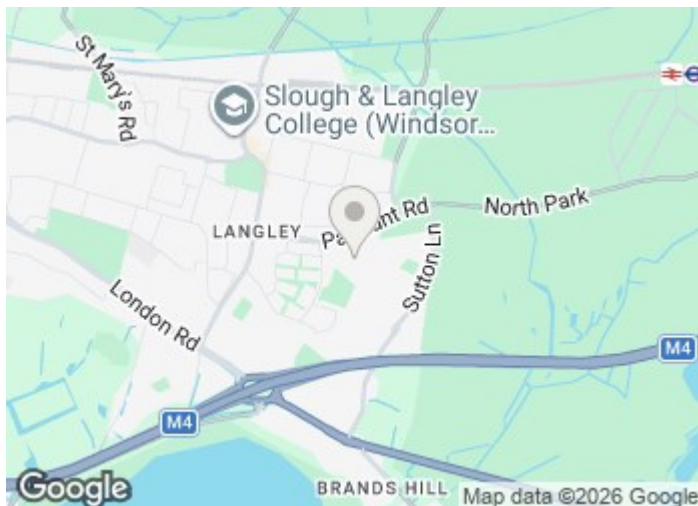
Local Authority: Slough Borough Council
Council Tax Band: C

£1,250 Per Month

17 Hurricane Court Heron Drive , Slough, SL3 8FA



- RECENT DEVELOPMENT
- 1 BEDROOM
- GROUND FLOOR APARTMENT
- PARKING AREA
- OPEN PLAN LOUNGE / KITCHEN
- MINUTES TO ELIZABETH LINE



Directions



Floor Plan

These particulars, whilst believed to be accurate are set out as a general outline only for guidance and do not constitute any part of an offer or contract. Intending purchasers should not rely on them as statements of representation of fact, but must satisfy themselves by inspection or otherwise as to their accuracy. No person in this firm's employment has the authority to make or give any representation or warranty in respect of the property.

1 The Crescent, Southall, Middlesex, UB1 1RE
Tel: 0208 571 0253 Email: info@parkfields-estates.com <https://www.parkfields-estates.com>

Energy Efficiency Rating		Current	Potential
<i>Very energy efficient - lower running costs</i>			
(92 plus) A			
(81-91) B			
(69-80) C	77	77	
(55-68) D			
(39-54) E			
(21-38) F			
(1-20) G			
<i>Not energy efficient - higher running costs</i>			
England & Wales		EU Directive 2002/91/EC	